

# The Seola Park Mews

Set on the edge of parkland and within easy access to lots of shops and facilities, Park Mews is a fantastic new community development that's just waiting for you to move in.

**Lower Ground Floor**

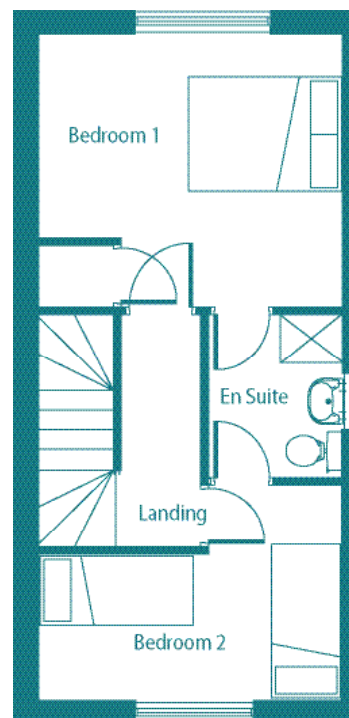
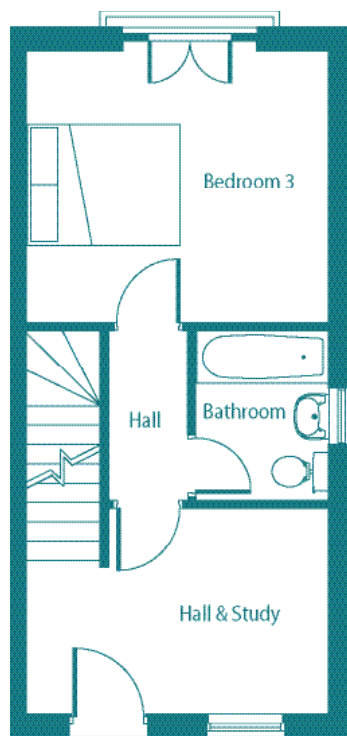
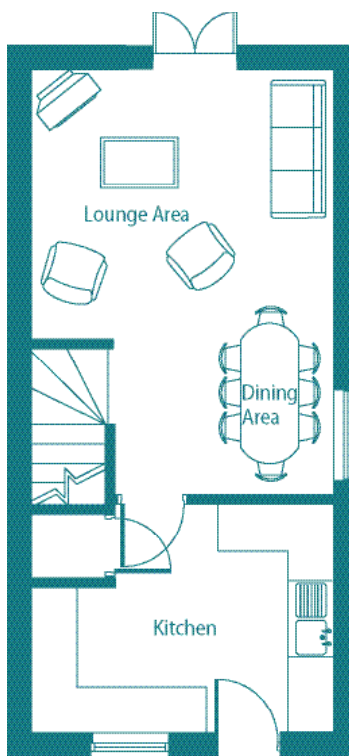
- Kitchen  
3.97 x 2.3m  
13' x 9'10"
- Lounge & Dining Area  
5.6 x 3.97m (max)  
18'5" x 13' (max)

**Upper Ground Floor**

- Hall & Study
- Bedroom 3  
3.97 x 3.57m  
13' x 11'8"
- Bathroom

**First Floor**

- Bedroom 1  
3.97 x 3.57m (max)  
13' x 11'8" (max)
- Bedroom 2  
3.97 x 2.81m (max)  
13' x 9'3" (max)
- Shared En Suite



These plans are not to scale. The information in this brochure is for general guidance only. Whilst every attempt has been made to ensure these particulars are accurate please refer to the sales negotiator on site before assuming any detail on any individual plot.

**Start planning your new home... now!**

For more information call Connells on **0121 525 1177**,  
 visit [www.connells.co.uk](http://www.connells.co.uk) or email [westbromwich@connells.co.uk](mailto:westbromwich@connells.co.uk)