

The Meadowbrook Park Mews

Set on the edge of parkland and within easy access to lots of shops and facilities, Park Mews is a fantastic new community development that's just waiting for you to move in.

Ground Floor

Bedroom 4
3.74 x 2.50m
12'3" x 8'3"

Bedroom 5
2.18 x 2.14m
7'2" x 7'

Garage
Shower & WC
Hall

First Floor

Kitchen
2.59 x 2.16m
8'6" x 7'1"

Dining Area
6.1 x 2.61m
20' x 8'7"

Lounge
4.78 x 2.9m
15'8" x 9'6"

Landing

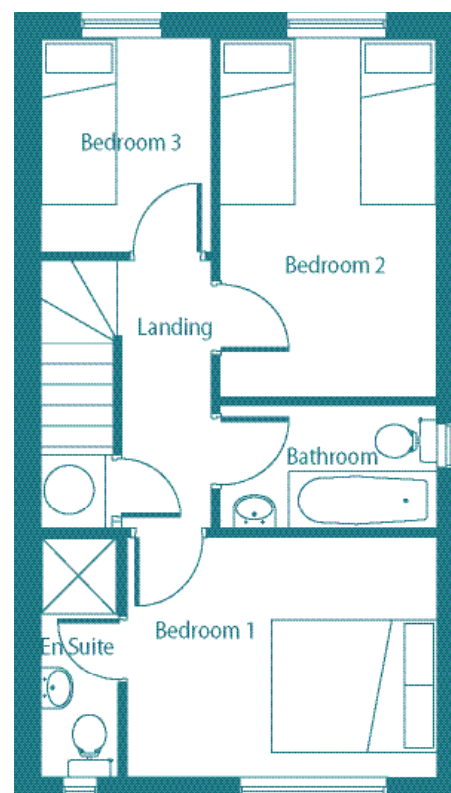
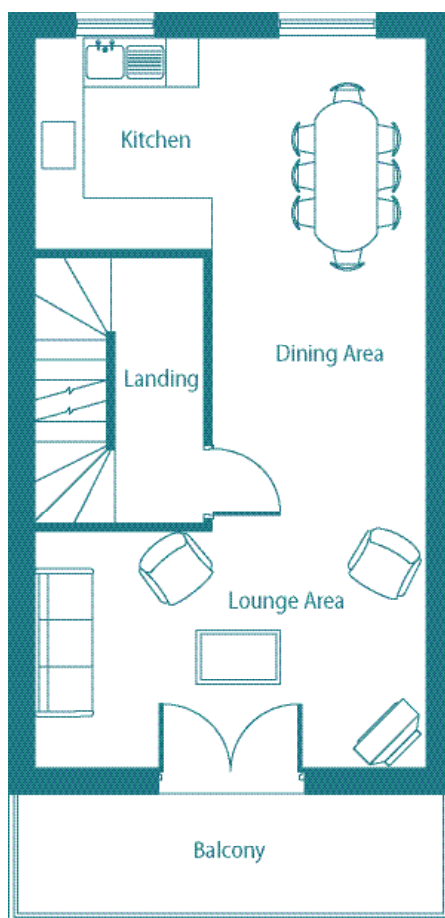
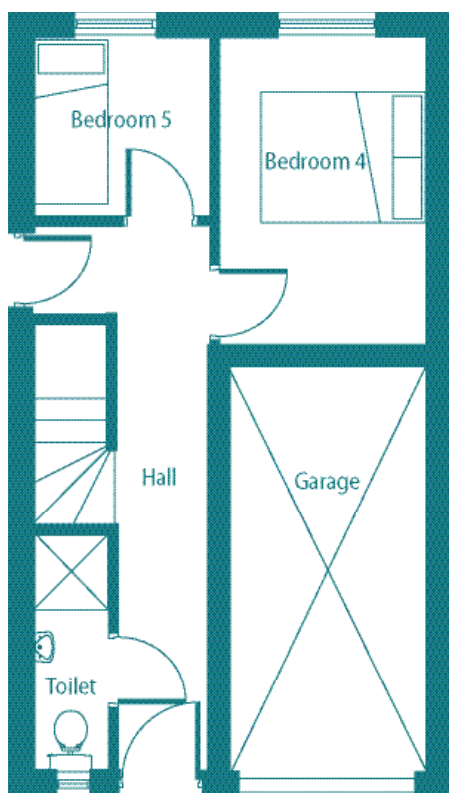
Second Floor

Bedroom 1
3.74 x 2.9m
12'3" x 9'6"

Bedroom 2
4.34 x 2.61m
14'3" x 8'7"

Bedroom 3
2.51 x 2.06m
8'6" x 6'9"

Bathroom
Landing



Start planning your new home... now!

For more information call Connells on 0121 525 1177,
visit www.connells.co.uk or email westbromwich@connells.co.uk