

The Cedar Park Mews

Set on the edge of parkland and within easy access to lots of shops and facilities, Park Mews is a fantastic new community development that's just waiting for you to move in.

Ground Floor

Bedroom 4
2.84 x 2.51m (max)
9'4" x 8'3" (max)

Garage

Utility

WC

Hall

First Floor

Kitchen
2.53 x 1.93m
8'4" x 6'5"

Dining Area
4.93 x 2.65m
16'3" x 8'8"

Lounge Area
4.82 x 2.96m
15'10" x 9'8"

Landing

Second Floor

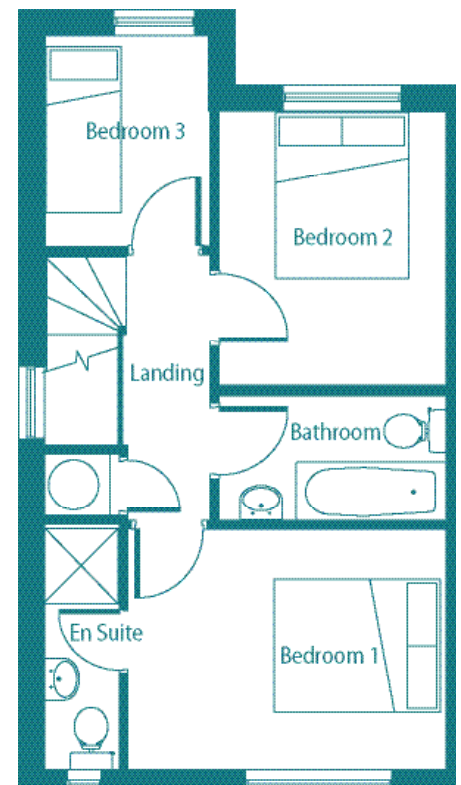
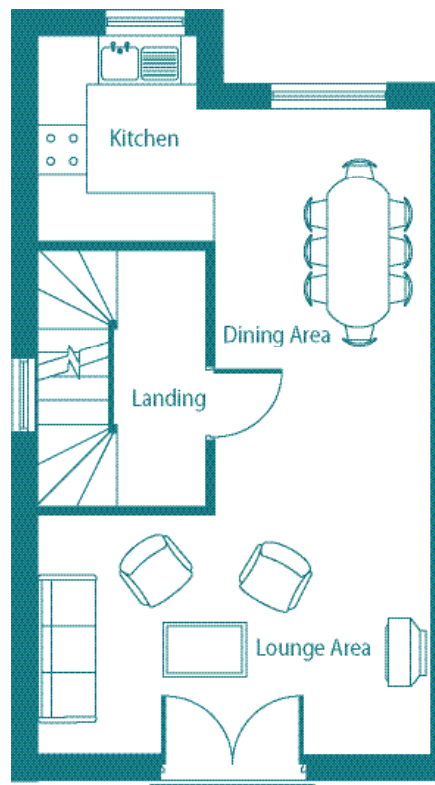
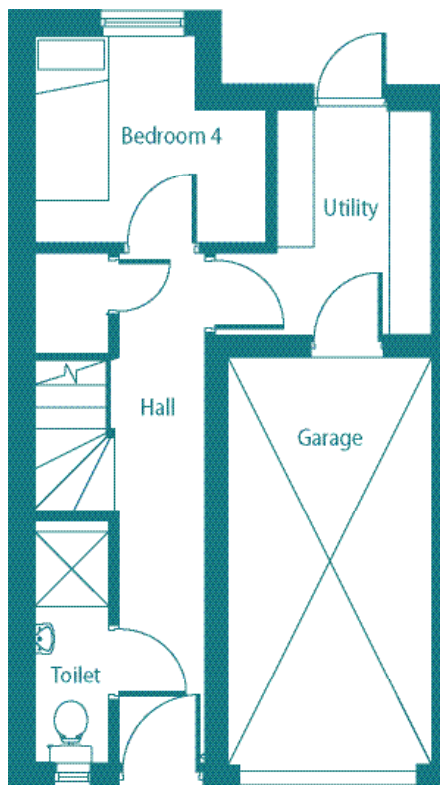
Bedroom 1
3.82 x 2.90m
12'6" x 9'6"
En Suite

Bedroom 2
3.32 x 2.73m
10'11" x 9'

Bedroom 3
2.53 x 1.97m
8'4" x 6'5"

Bathroom

Landing



Start planning your new home... now!

For more information call Connells on 0121 525 1177,
visit www.connells.co.uk or email westbromwich@connells.co.uk